

TECHNICAL DATASHEET



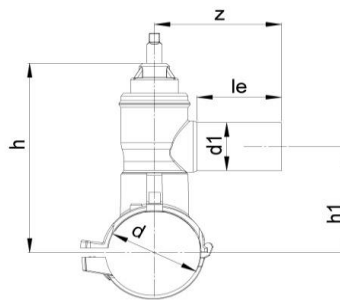
EF TAPPING VALVE

04 Update - 02/2023

TECHNICAL DATA

Article No	001 117 2072 0145
d (mm)	140
d1 (mm)	63
le (mm)	100
h (mm)	262
h1 (mm)	153
Z (mm)	152
L (mm)	140
Weight (Kg)	2,540
Box Quantity (pcs)	5
Box Dimension (cm)	55x30,5x37

INJECTION MOULDED



IDENTIFICATION OF PRODUCT

D(mm)	140-63
SDR	11
RAW MATERIAL	PE 100
PRESSURE CLASS	16 Bar Water
TRADEMARK	NTG
EXECUTION	Injection Moulded
STANDARD	EN 12201-3

EF SPECIFICATION

WELDING VOLTAGE	40 V
RESISTANCE	7.0 Ω
WELDING TIME	130 Sec.
COOLING TIME	15 Min.
WINDING TYPE	Monofilar
WELDING BARCODE	



142007321403407005130111

SPECIFICATION	Suitable for SDR11....17 pipe 4 mm pin connectors Long fusion outlet Opening on the spanner is 18 turns Wrench 12 mm The valve is closed clockwise
---------------	---

Tolerance on diameters and thickness according to the standards. The other dimensions are specialized. Tolerance $\pm 5\%$. NTG PLASTIK reserves all the right to change any information without giving prior notice. The production, distribution and utilization of this document without explicit authorization is prohibited.